

List of Alvar Aalto's Buildings for Modeling

For the first week of the class, select a building from this list and try to search resources (drawing, photo, text) to learn the building and assemble a poster image. In the second week after selecting the building, a good number of drawings from the Aalto Foundation archive will be made available for each modeling project. Some buildings are simple to model but come with featured topics to explore.

- A: relatively simple modeling
- B: medium modeling difficulty
- C: complex building to model

Online Reference: <https://finnisharchitecture.fi/>

Finish Architecture Navigator

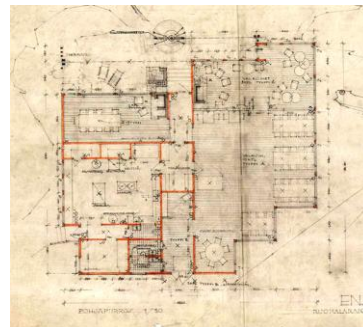
Reference at MIT Libraries

- K. Fleig / Alvar Aalto / NA1455.F53.A112.F545.1994
- K. Fleig / Alvar Aalto Band 1 (1922-62) / NA1455.F53.A112.A35.1984 bd.1
- K. Fleig / Alvar Aalto Band 2 (1963-70) / NA1455.F53.A112.A35.1984 bd.2
- K. Fleig / Alvar Aalto Band 3 (1971-) / NA1455.F53.A112.A35.1984 bd.3
- R. Weston / Alvar Aalto / NA1455.F53.A235.1955
- G. Schildt / Alvar Aalto / NA1455.F53.A23715.1998

[Club house]

A: Enso-Gutzeit's Country Club

*Contact TN/Rohit for plan/elevation

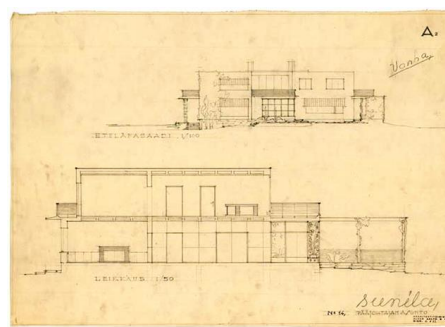


<https://foursquare.com/v/ensogutzeit-oy-n-country-club-ja-sauna/5a46ae6dcf72a02cf1b0c7d1>

[Private house/studio]

B: Sunila director's house (Kantola)

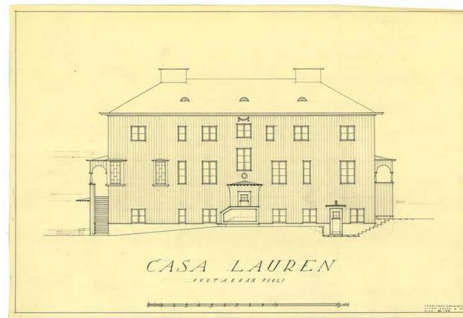
*Contact TN/Rohit for plan/elevation



<https://finnisharchitecture.fi/kantola-house/>

A: Casa Lauren

*Contact TN/Rohit for plan/elevation



<https://finnisharchitecture.fi/casa-lauren/>

A: Villa Manner

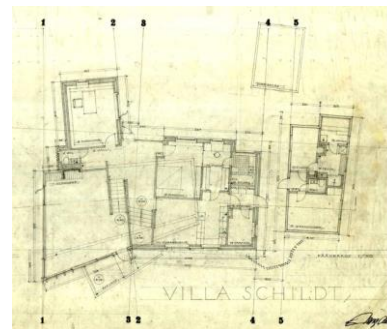


B: Maison Louis Carre



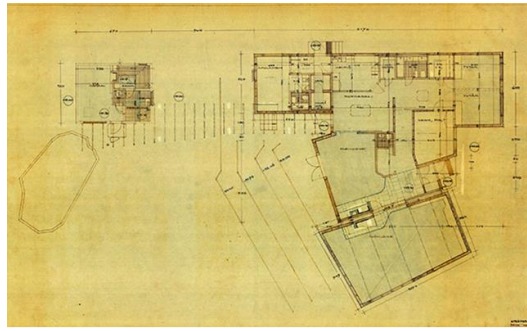
<https://finnisharchitecture.fi/maison-louis-carre/>

B: Villa Skeppet (Schildt House)



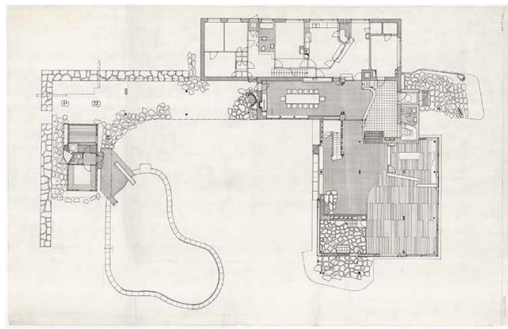
<https://finnisharchitecture.fi/villa-skeppet/>

B: Kokkonen House



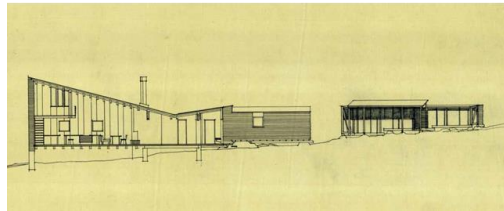
<https://finnisharchitecture.fi/villa-kokkonen/>

C: Villa Mairea



<https://finnisharchitecture.fi/villa-mairea/>

A: Experimental House (Summer House)



<https://finnisharchitecture.fi/muuratsalo-experimental-house/>

B: Aalto studio



<https://finnisharchitecture.fi/studio-aalto/>

[Apartment]

B: Pietarsaari rowhouse *Contact TN/Rohit for plan/elevation *Recommended by the curator



https://www.google.com/maps/place/Kvarnbacksgatan+1,+68600+Jakobstad/@63.6719429,22.7093866,3a,75y,53.85h,76.97t/data=!3m7!1e1!3m5!1sGuZvhUOo-xvHAAOn53zw9A!2e0!6shttps:%2F%2Fstreetviewpixels-pa.googleapis.com%2Fv1%2Fthumbnail%3Fpanoid%3DGuZvhUOo-xvHAAOn53zw9A%26cb_client%3Dsearch.gws-prod.gps%26w%3D408%26h%3D240%26yaw%3D111.620224%26pitch%3D0%26thumbfov%3D100!7i13312!8i6656!4m5!3m4!1s0x4687681a73102f8f:0x8eddc29ef4f8fe1a!8m2!3d63.6719052!4d22.7095952

B: Kauttua Terrace Housing



<https://finnisharchitecture.fi/stepped-terrace-house/>

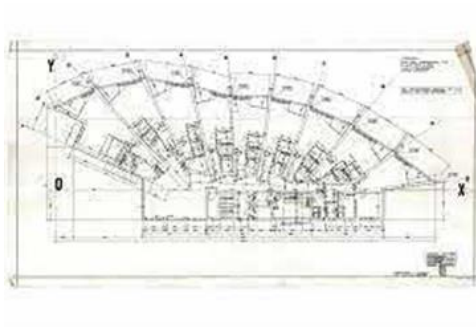
B: Schonbuhl lakeside apartment

* Recommended by TN



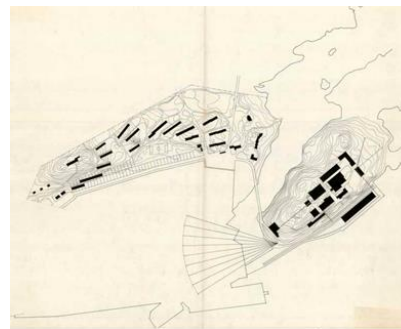
<https://finnisharchitecture.fi/schonbuhl-apartment-house-and-commercial-centre/>

B: Neue Vahr Aalto-Hochhaus apartment



<https://finnisharchitecture.fi/aalto-hochhaus/>

A: Housing for the cellulose factory (Sunila Pulp Mill and Housing)



<https://finnisharchitecture.fi/sunila-pulp-mill-and-residential-area/>

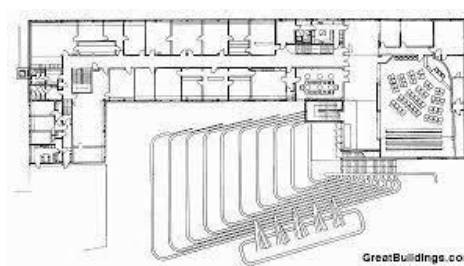
[Town Hall]

B: Säynätsalo Town Hall



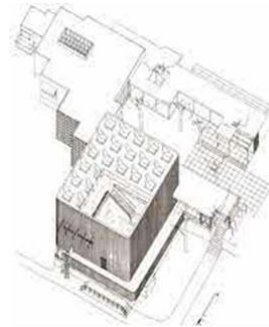
<https://finnisharchitecture.fi/saynatsalo-town-hall/>

B: Seinajoki Town Hall



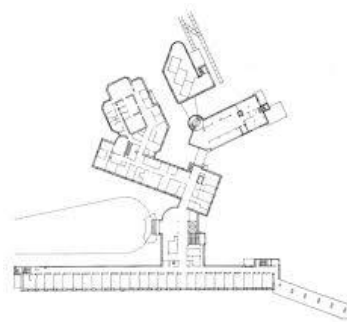
[Temporary Structure]

B: Finnish Pavilion (Paris World's Fair, 1937)



[Institutional projects]

C: Paimio Sanatorium * Possibly for a group of two students



<https://finnisharchitecture.fi/paimio-sanatorium/>

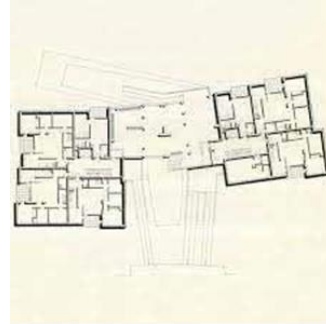
C: Finlandia hall * Possibly for a group of two students



<https://finnisharchitecture.fi/finlandia-hall/>

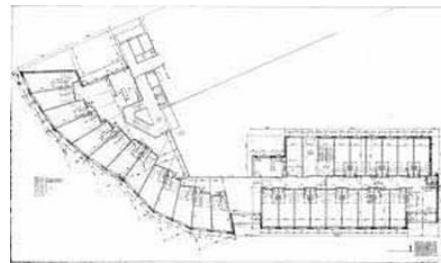
[Alternative options only in case all buildings above are taken]

B: Hansaviiertel Apartment



<https://finnisharchitecture.fi/hansaviiertel-apartment-house/>

B: Otaniemi Student Dormitory



<https://finnisharchitecture.fi/student-dormitory-for-the-university-of-technology-in-otaniemi/>

C: MIT Baker House

